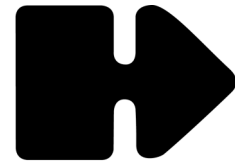
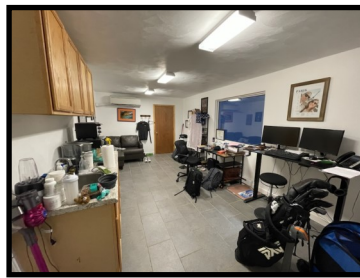
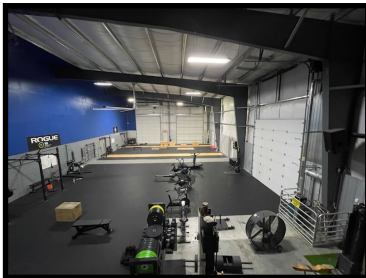


FOR LEASE



Hall Associates
Commercial Real Estate Solutions since 1975



3656 Peters Creek Road Ext

Suite A
Roanoke, Virginia

- ◆ Built in 2018, this industrial building offers a prominent location on Peters Creek Road near Brandon Avenue.
- ◆ 5,000 square feet of high cube space.
- ◆ 22' ceiling height at eaves and 24' at center.
- ◆ One 14' high, Two 16' high drive-in doors.
- ◆ Second floor office space with break area and private restroom.
- ◆ First floor restroom with shower.
- ◆ Fireproof wall between the two tenants.
- ◆ Portion of the floor has radiant floor heat.
- ◆ Over-sized exhaust fan.
- ◆ Landlord reserves the right to approve tenant's use.

\$8.95 per square foot plus utilities

For additional information contact:

Tom Turner, CCIM, SIOR

Office: (540) 857-5858

Email: turner.hallassociates@gmail.com

Gavin Hollingsworth

Direct: (540) 797-8250

Email: ghollingsworth@hallassociatesinc.com

www.hallassociatesinc.com

112 Kirk Ave. SW Roanoke, VA 24011 Phone: 540-982-0011

Hall Associates makes no warranty, expressed or implied, as to the accuracy of the property information.