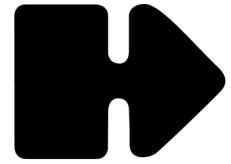
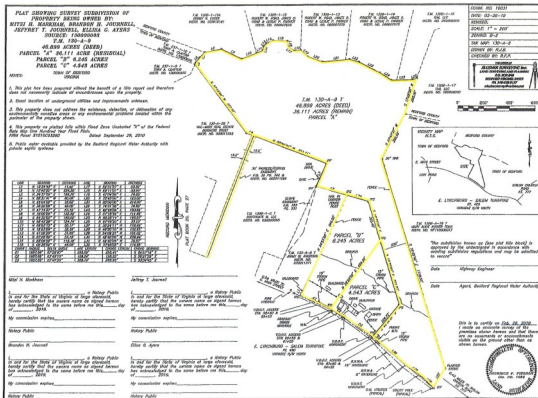


LAND FOR SALE



Hall Associates
Commercial Real Estate Solutions since 1975

1334 East Lynchburg Salem Turnpike Bedford, Virginia



For additional information contact:

Gavin Hollingsworth

Direct: (540) 797-8250

Email: ghollingsworth@hallassociatesinc.com

Tom Turner, CCIM, SIOR

Office: (540) 857-5858

Email: tsturner@rev.net

Property Highlights

- ◆ Attractive commercial land offering a prime development opportunity.
- ◆ Approximately 1,278 feet of total road frontage on Highway 460.
- ◆ Located between two signal lights.
- ◆ Neighboring national companies include Walmart, Tractor Supply Company, Lowe's, and more.
- ◆ Public water and sewer are available.
- ◆ Zoned B-2 General Business which allows for a broad range of commercial uses in the Town of Bedford Zoning.

THREE PARCELS

- A - Largest parcel that spans approximately 36.11 acres with a signal light and an ingress/egress easement between Walmart and Tractor Supply Company - **\$541,665.**
- B - Approximately 6.245 acres - **\$468,375.**
- C - Approximately 5.43 acres - **\$340,725.**

\$1,350,765

www.hallassociatesinc.com

112 Kirk Ave. SW Roanoke, VA 24011 Ph: 540-982-0011

This information is deemed reliable however Hall Associates makes no warranty, expressed or implied, as to its accuracy.