

# Hall Associates

## Commercial Property



[hallassociatesinc.com](http://hallassociatesinc.com)





**Hall Associates**  
Commercial Real Estate Solutions



## Office Warehouse

Salem, Virginia, 24153

Type: Industrial

For: Lease    Years: 1980    Zone: LM

Contact: Lynn Hall

Description: Great office/warehouse space located in salem near Lowes, just off 4th street. 2 office spaces and the rest warehosue. Idean for a small light industrial or service user. Tenant is responsible for its pro-rata shared of water, insurance, and real...



## Office Warehouse

Salem, Virginia, 24153

Type: Industrial

For: Lease    Years: 1980    Zone: LM

Contact: Lynn Hall

Description: Office/Warehouse space is located in s great Salem area near Lowes. Building offers both warehosue space and finished office space with 5 offices. This building is well suited for a variety of light industrail and service uses. 5 drive-in doors complement the large warehosue...



## 703 Townside Rd

Roanoke, Virginia, 24014

Type: Office

For: Lease    Years: 1976    Zone: CG

Lease Rate: \$17.00

Contact: Lynn Hall

Description: Great small office or retail setting located near Townside Festival Shopping Center. On-site parking and signage available. All utilities included. New paint and flooring throughout.



**Hall Associates**  
Commercial Real Estate Solutions



## Roanoke Street, Salem - Industrial Investment

Salem, Virginia, 24153

Type: Industrial

For: Sale Class: B Years: 1994 Zone: LM

Contact: Gavin Hollingsworth

Co-Listed 1 with Thomas Turner

Description: Industrial investment property for sale in Salem, Virginia. Approximately 7,125 square feet improvements which are situated on .48 acre. Two modern metal flex buildings which can accommodate five tenants. Two units, 3,000 square feet, are combined and occupied by the...



## 5303 Indian Grave

Roanoke, Virginia, 24018

Type: Office

For: Sale or Lease Class: B Years: 1983

Contact: Christopher Nelson

Co-Listed 1 with Stuart Meredith CCIM,SIOR

Description: This property is a 5,678 square foot, one story medical/office building. It sits on a 1.15 acre site. The property has been well maintained and has ample parking. The building is...



## La Premiere

Roanoke, Virginia, 24018

Type: Office

For: Lease Class: B

Lease Rate: \$14.50

Contact: Gavin Hollingsworth

Description: Prominent Southwest Roanoke County office building available for lease at competitive rate. Located on Route 419 / Electric Road between Roanoke and Salem. Annual Average Daily Traffic Count of approximately 25,000 vehicles. Crossover on Electric Road onto property. Two story...



**Hall Associates**  
Commercial Real Estate Solutions



## Apperson Investment - Blue Ridge Hydroponics

Salem, Virginia, 24153

Type: Investment Property

For: Sale Class: B Years: 1954/2022 Zone: HBD

Contact: Gavin Hollingsworth

Co-Listed 1 with Thomas Turner

Description: Investment property for sale. It is strategically located along the main corridor linking Salem and Roanoke. This premier property offers great exposure and accessibility. The building is comprised of approximately 6,143 square feet situated on roughly 0.87 acre. It has...



## Roanoke City Industrial Flex Building

Roanoke, Virginia, 24016

Type: Industrial

For: Sale Class: C Years: 1974 Zone: UF

Lease Rate: \$6.38

Contact: Gavin Hollingsworth

Description: Presented by Tom Turner and Gavin Hollingsworth with Hall Associates, this desirable warehouse flex space is located between Grandin area and Downtown Roanoke. Over 4,200 square feet of open warehouse space with a large drive-in overhead door. Also, over 800...



**Hall Associates**  
Commercial Real Estate Solutions



## Grandin Area - Memorial Ave Commercial Opportunity

Roanoke, Virginia, 24015

Type: Retail

For: Sale Class: B Years: 1925 Zone: CN

Contact: Gavin Hollingsworth

Co-Listed 1 with Thomas Turner

Description: Positioned in the heart of Roanoke's vibrant Grandin Village, 1911 Memorial Ave SW offers a unique investment opportunity within the esteemed Grandin Road Commercial Historic District. This approximately 2,900 sq ft commercial property, built in 1925, boasts a prominent location...



## Sharmikes on Brandon Avenue SW

Roanoke, Virginia, 24018

Type: Retail

For: Sale Years: 1977 / 2017

Contact: Gavin Hollingsworth

Description: Price Reduced. This exceptional centrally located Roanoke City commercial property provides great visibility and allows for a variety of commercial uses. It is at a convenient location for both customers and employees with access from Brandon Avenue and Deyerle Road....



## Wilmer Gray Building

Roanoke, Virginia, 24018

Type: Office

For: Lease Class: B Years: 1978

Lease Rate: \$15.30

Contact: Gavin Hollingsworth

Description: JUST LISTED! Offered by Gavin Hollingsworth and Thomas Turner, SIOR, CCIM with Hall Associates - First floor office suite near Cave Spring Corner. Approximately 3,138 square feet on the lower level of a two-tenant office building. Suite includes a reception...



**Hall Associates**  
Commercial Real Estate Solutions



## Former Bosen Building

Salem, Virginia, 24153

Type: Office

For: Lease Class: B Years: 1900 Zone: DBD

Lease Rate: \$18.00

Contact: Gavin Hollingsworth

Description: Offered by Gavin Hollingsworth and Tom Turner with Hall Associates, here is a rare opportunity to have your company reside in the heart of Downtown Salem! At 306 East Main Street, you could be located next to the recent development...



## 358 Apperson

Salem, Virginia, 24153

Type: Office

For: Lease

Lease Rate: \$8.50

Contact: Christopher Nelson

Co-Listed 1 with Stuart Meredith CCIM,SIOR

Description: This space is a corner unit located on a highly traveled Apperson Drive about a quarter mile from the intersection of 419 and Apperson Drive. Total available space is 7,500 square feet (2,400 sq. ft. office space and 5,100 sq....





**Hall Associates**  
Commercial Real Estate Solutions



## 124 Wells Avenue

Roanoke, Virginia, 24016

Type: Office

For: Sale or Lease

Lease Rate: \$16.00

Contact: Christopher Nelson

Description: This property is approximately 2,640 square feet of nicely renovated office space. It consists of 8 offices, two conference rooms, reception area and two bathrooms. The site includes a private paved parking lot with 15+ spaces. It is located on...



## Buffalo Hemp - Wasena Building Investment

Roanoke, Virginia, 24015

Type: Investment Property

For: Sale Class: A Years: 1951/2017 Zone: CN

Contact: Gavin Hollingsworth

Co-Listed 1 with Thomas Turner

Description: Rare investment opportunity in the Roanoke submarket, Wasena, on Main Street. Small versatile building with mostly open floor plan. Less than 1,000 square feet. Buffalo Hemp Co is a tenant with a three-year lease. 3% annual increase in rent. Inquire...



## 2774 Electric Rd - McVitty Executive Center

Roanoke, Virginia, 24018

Type: Office

For: Lease Class: B Years: 2004

Contact: Gavin Hollingsworth

Description: Great opportunity to have your office located along the bustling Electric Road corridor. Located in McVitty Executive Center, building 2774 is the first one right off the back entrance. Parking located right out front. Suite C is located on the...



**Hall Associates**  
Commercial Real Estate Solutions



## 418 1st St SW

Roanoke, Virginia, 24011

Type: Office

For: Lease Class: B Years: 1904; 2007 Zone: D

Lease Rate: \$14.50

Contact: Kristine Davis

Co-Listed 1 with Frank Martin

Description: +/- 2,682 SF of first-floor office space available. The layout includes 6 private offices, two conference rooms, a spacious break room, and a utility/storage room. Situated directly across from well-known restaurants, such as Martin's...



## 821 Kabrich St

Blacksburg, Virginia, 24060

Type: Land

For: Sale Class: N/A Years: 1960 Zone: CG

Contact: Kristine Davis

Co-Listed 1 with Frank Martin

Description: This property is located directly across from the proposed and approved 8-story student housing development at the 800 block of Kabrich St, 100 block of Winston Ave, and 900 block of Progress St. It is nearly adjacent to the Virginia...



## 3771 Peters Creek Road

Roanoke, Virginia, 24018

Type: Land

For: Sale Zone: CG

Contact: Christopher Nelson

Description: This site is approximately 1.15 acres with a mostly flat topography. It is zoned CG in the City of Roanoke which allows many commercial uses. The site is also located near the high traffic intersection of Peters Creek Road and...





**Hall Associates**  
Commercial Real Estate Solutions



## N Franklin Christiansburg Development Opportunity

Christiansburg, Virginia, 24073

Type: Retail

For: Sale Class: B Years: 1970 Zone: B3

Contact: Gavin Hollingsworth

Co-Listed 1 with Thomas Turner

Description: Offered By Thomas Turner, CCIM, SIOR, and Gavin Hollingsworth with Hall Associates, Inc - Prime development opportunity in the heart of Christiansburg, VA. 2890 & 2910 N Franklin St, two parcels with approximately 2.456 AC located on bustling N Franklin...



## 0 22nd St SW

Roanoke, Virginia, 24014

Type: Land

For: Sale Zone: RMF

Contact: Kristine Davis

Co-Listed 1 with Frank Martin

Description:



## 2222 Electric Rd

Roanoke, Virginia, 24018

Type: Office

For: Sale Class: C Years: 1983 Zone: C2

Contact: Kristine Davis

Co-Listed 1 with Frank Martin

Description: This is a fantastic opportunity to acquire a strategically located, highly visible office building on Electric Road in SW Roanoke County- a prime business corridor connecting Roanoke and Salem, VA. This building offers excellent visibility with easy access to major...



**Hall Associates**  
Commercial Real Estate Solutions



## 0 Avery Row

Roanoke, Virginia, 24019

Type: Land

For: Sale Class: N/A Zone: M-1

Contact: Kristine Davis

Co-Listed 1 with Frank Martin

Description: Avery Row is a prime parcel of industrial land located in Botetourt County, spanning +/- 15.197 acres. Zoned M-1, this property offers versatile development opportunities and is well-suited for industrial, manufacturing, and commercial use....



## 15 Salem Ave

Roanoke, Virginia, 24011

Type: Office

For: Sale Class: B Years: 1904/2010, 2013, 2017, 2018 Zone: D

Contact: Kristine Davis

Co-Listed 1 with Frank Martin

Description: We are excited to present a unique opportunity in the heart of Downtown Roanoke. This property is ideally located just steps from the Roanoke City Market Building, providing easy access to fine dining, entertainment, museums, banks, shopping, and more. It...



## 2005 E Main St

Salem, Virginia, 24153

Type: Land

For: Sale Zone: HBD

Contact: Kristine Davis

Co-Listed 1 with Frank Martin

Description:



**Hall Associates**  
Commercial Real Estate Solutions



## 95 Patricia Ln

Christiansburg, Virginia, 24073

Type: Land

For: Sale Class: D Zone: B3

Contact: Kristine Davis

Co-Listed 1 with Frank Martin

Description:



## 0 S Main St

Blacksburg, Virginia, 24060

Type: Land

For: Sale Zone: GC

Contact: Kristine Davis

Co-Listed 1 with Frank Martin

Description:



## 1138 2nd St SW

Roanoke, Virginia, 24016

Type: Office

For: Lease Class: B Zone: MX

Lease Rate: \$15.00

Contact: Kristine Davis

Co-Listed 1 with Frank Martin

Description: Now available in the Old SW area of Roanoke, this second-floor office suite features a reception area, four private offices, a kitchenette, and common area restrooms.â€ The building is ADA-compliant with elevator access and ample parking.â€ With excellent frontage and access...





**Hall Associates**  
Commercial Real Estate Solutions



## 19 Franklin Rd SW

Roanoke, Virginia, 24011

Type: Office

For: Lease Class: B Zone: D

Lease Rate: \$18.00

Contact: Kristine Davis

Co-Listed 1 with Frank Martin

Description: +/- 2,000 square feet of first-floor office space in the heart of Downtown Roanoke. Heavy daytime foot traffic Large windows along Franklin Road with high visibility and potential for signage Walking distance to retail, banking, and some...



## 5604 Starkey Rd

Roanoke, Virginia, 24018

Type: Office

For: Lease Class: B Zone: C1

Lease Rate: \$15.68

Contact: Kristine Davis

Co-Listed 1 with Frank Martin

Description: Well-maintained building offering two available office suites, with the option to Lease the entire building. Suite A: +/- 1,580 of usable SF (+/- 2,112 rentable SF) &ndash; Features reception, private offices, and open work areas. Suite B: +/- 1,386 of usable SF...



**Hall Associates**  
Commercial Real Estate Solutions



## 4519 Brambleton Ave

Roanoke, Virginia, 24018

Type: Office

For: Lease Class: C Zone: C2

Lease Rate: \$12.50

Contact: Kristine Davis

Co-Listed 1 with Frank Martin

Description: Office building with +/- 1,414 square feet in Southwest Roanoke County- first floor office space available with ample parking close to the door and space entrance. Features ADA compliant access and bathrooms, open reception...



## Office/Retail Investment Building in Collinsville

Collinsville, Virginia, 24078

Type: Office

For: Sale Class: B Years: 2004 Zone: C

Contact: Gavin Hollingsworth

Description: Introducing an exciting investment opportunity! 4743 Kings Mountain Road is now available for sale in Collinsville, Virginia. This one-story brick building, constructed in 2004, features two subdivided suites with existing tenants. The newly built-out salon on the right and the...



## 18309 A L Philpott Hwy

Spencer, Virginia, 24165

Type: Retail

For: Sale Class: B

Contact: Stuart Meredith CCIM,SIOR

Description: Former Family Dollar store located near Martinsville VA. 8,000 square foot building on high traffic highway.



**Hall Associates**  
Commercial Real Estate Solutions



## 0 Taylors Rd

Boones Mill, Virginia, 24065

Type: Land

For: Sale Zone: B2; A1

Contact: Kristine Davis

Co-Listed 1 with Frank Martin

Description: Combination of Two Parcels With Outstanding Visibility and Presence on Route 220. Just Down the Road From Boones Mill Elementary.



## 0 Challenger Ave - 4618 Huntridge Rd

Roanoke, Virginia, 24012

Type: Land

For: Sale Zone: C2C

Contact: Kristine Davis

Co-Listed 1 with Frank Martin

Description: Located on a major commuter route and growth corridor near the intersection of Route 460 E (Challenger Ave) and Route 220 South (Cloverdale Rd) with approximately 13.39 acres available. Excellent location (on the going-to-work side of the...



## 3406 Brambleton Avenue

Roanoke, Virginia, 24018

Type: Retail

For: Lease Years: 1955 Zone: County-C2

Contact: Christopher Nelson

Description: Lots of visibility, good traffic count and corner location. Space is approximately 1,644 square feet. First and second floor. Great location on Brambleton Ave next door to Clip & Dip and Our Daily Bread \$1,950 per month. Plenty of parking.





**Hall Associates**  
Commercial Real Estate Solutions



## SW City Industrial Flex Space

Roanoke, Virginia, 24016

Type: Industrial

For: Lease Class: B Years: 1974 Zone: UF

Lease Rate: \$6.38

Contact: Gavin Hollingsworth

Co-Listed 1 with Thomas Turner

Description: Great warehouse flex space located between Grandin area and Downtown Roanoke. Over 4,000 square feet of open warehouse space with a large drive-in overhead door. Also, over 800 square feet office space. Three private offices, a reception area, and two...



## 1519 Williamson Road

Roanoke, Virginia, 24012

Type: Retail

For: Sale

Contact: Christopher Nelson

Description: The property is on a high traffic street. The building is 6,484 square feet on a .303 acre site. With the CG Zoning in the City of Roanoke there are many retail/office uses for the property.



**Hall Associates**  
Commercial Real Estate Solutions



## 3902 Franklin Road

Roanoke, Virginia, 24014

Type: Office

For: Lease

Lease Rate: \$14.00

Contact: Christopher Nelson

Co-Listed 1 with Stuart Meredith CCIM,SIOR

Description: This property is zoned CG in the City of Roanoke which allows for many office/retail uses. The property is well maintained and has plenty of parking. It has a high accessibility from 220 and easy access to 220 and Franklin...



## 0 Electric Rd

Roanoke, Virginia, 24018

Type: Land

For: Sale Zone: C1C

Contact: Kristine Davis

Co-Listed 1 with Frank Martin

Description: This +/- 3.8-acre parcel on Route 419, offers 200 feet of prominent frontage, ensuring high visibility in a rapidly growing area of SW Roanoke County, near the intersection of Electric Road and Brambleton Avenue (Cave Spring Corners). The site is...



## Brambleton Corporate Center

Roanoke, Virginia, 24018

Type: Office

For: Sale or Lease

Contact: Christopher Nelson

Description: Well maintained office building, plenty of parking, office space available from 400 sq. ft. and up, property is for sale at \$1,750,000.00 Centrally located in Southwest Roanoke County at 3433 Brambleton Ave. near Advance Auto Parts.



**Hall Associates**  
Commercial Real Estate Solutions



## 7703 Enon Dr

Roanoke, Virginia, 24019

Type: Industrial

For: Lease Class: N/A Years: 1974

Lease Rate: \$5.50

Contact: Stuart Meredith CCIM,SIOR

Co-Listed 1 with Christopher Nelson

Description: The space is 27,500 sq. ft. and has both drive in door and dock doors. Recent upgrades include: sprinkler system, new gas heaters supplied by Roanoke Gas and LED lighting throughout. This building is located right off of Interstate 81...



## 5.1 AC on Orange Ave

Roanoke, Virginia, 24012

Type: Land

For: Sale Zone: RM-2

Contact: Gavin Hollingsworth

Co-Listed 1 with Thomas Turner

Description: Located in the heart of the Roanoke Valley, this 5.1 acre site in the 3500 block of Orange Avenue is a prime development opportunity. It is situated in a vibrant retail and commercial...



## 3.93 AC on Orange Avenue NE

Roanoke, Virginia, 24012

Type: Land

For: Sale

Contact: Gavin Hollingsworth

Co-Listed 1 with Thomas Turner

Description: Located in the heart of the Roanoke Valley, this 3.93 acre site in the 3500 block of Orange Avenue is a prime development opportunity. It is situated in a vibrant retail and commercial...





**Hall Associates**  
Commercial Real Estate Solutions



## Commercial Land, Galax, VA

Galax, Virginia, 24333

Type: Land

For: Sale

Contact: Thomas Turner

Description: PRICE REDUCED. Approximately 4.14 acres of prime retail and commercial land along the U.S. 58 and 221 corridor in Galax, Virginia. Located next to parcel developed for Goodwill Industries. Parcel B on attached survey. This area is home to Walmart,...



## 4+ acres of land MX zoning near Hunting Hills

Roanoke, Virginia, 24014

Type: Land

For: Sale      Zone: MX

Contact: Gavin Hollingsworth

Co-Listed 1 with Thomas Turner

Description: First time on the market! Do not miss this prime commercial development opportunity! Approximately 4.36 acres of land across two parcels with a Roanoke City zoning of Mixed Use (MX). The property is situated just off Route 220 on Old...



## 2110 Carolina Ave SW

Roanoke, Virginia, 24014

Type: Office

For: Under Contract    Class: B    Years: 1980    Zone: CN

Contact: Frank Martin

Description: Beautiful, well-maintained medical/office building with +/- 12,980 square feet encompassing three floors. This building features a spacious, clean setting with private offices, individual exam rooms, open reception areas, nurse stations, ample parking, and incredible signage in a highly visible area...



**Hall Associates**  
Commercial Real Estate Solutions



## Montvale Modern Industrial Building

Montvale, Virginia, 24122

Type: Industrial

For: Lease Class: B Years: 2004 Zone: Commercial/Industrial

Lease Rate: \$10.05

Contact: Gavin Hollingsworth

Description: Modern industrial building located in Montvale, VA between Roanoke and Bedford. Consisting of approximately 4,000 square feet in a one-story building. Attractive interior includes reception area, 10 private offices, conference room, two bathrooms (one in office and one in warehouse),...



## Reinhardt Peters Creek Office Building

Roanoke, Virginia, 24019

Type: Office

For: Sale Class: C Years: 1992 Zone: C1

Contact: Gavin Hollingsworth

Co-Listed 1 with Thomas Turner

Description: Great investment, owner/occupy, or redevelopment property along a heavily trafficked corridor of Peters Creek Road. Approximately 14,850 square feet of office space. The left side of the building has an elevator that connects all three stories. The right side has...



**Hall Associates**  
Commercial Real Estate Solutions



## Sitevision

Roanoke, Virginia, 24016

Type: Office

For: Lease Class: C Zone: MX

Lease Rate: \$15.00

Contact: Elliot Broyles

Description: Beautiful and stately building with 1,818 sf of first-floor office space conveniently located in Old Southwest between Highland and Albemarle. 1011 2nd Street SW has a reception area, 4 offices, a conference room, and a break room/kitchenette.



## 2445 E Washington Ave, Vinton

Vinton, Virginia, 24179

Type: Retail

For: Lease Class: C Years: 2008 Zone: C-2S

Lease Rate: \$14.00

Contact: Elliot Broyles

Co-Listed 1 with Christopher Nelson

Description: Fantastic location on Route 24 with close proximity to multiple neighborhoods, William Byrd High School, and a well-traveled route to/from Smith Mountain Lake. Property provides plenty of parking, good visibility, and easy access to the property. One space available...



**Hall Associates**  
Commercial Real Estate Solutions



## Christiansburg Office Suites

Christiansburg, Virginia, 24073

Type: Office

For: Lease Class: C Years: 1940 Zone: B3

Lease Rate: \$21.00

Contact: Elliot Broyles

Co-Listed 1 with Gavin Hollingsworth

Description: Get down to business in a professional office at a low monthly rate and full-service lease with flexible terms. These Christiansburg office spaces are perfect for beginning or expanding a small business. Several professional offices can be leased individually or...



## 1106 Orange Ave NW

Roanoke, Virginia, 24017

Type: Land

For: Lease Class: N/A Zone: MX

Contact: Elliot Broyles

Co-Listed 1 with Gavin Hollingsworth

Description: Two plots on a highly traveled section of Orange Avenue NW. One block from Advance Auto Parts. Properties may be leased together or separately. Rate and term are negotiable based on usage. MX zoning allows mixed use including multi-family dwelling, offices,...



## 1260 Electric RD

Salem, Virginia, 24153

Type: Land

For: Sale Zone: RSF

Contact: Frank Martin

Description: There are a total of three lots for sale - totaling 1.62 acres. Currently zoned Residential, this property has road-frontage, is located among many commercial buildings and is prime for a re-zoning to commercial. Current income from single family tenants...





**Hall Associates**  
Commercial Real Estate Solutions



## Windsor Hills Executive Center

Roanoke, Virginia, 24018

Type: Office

For: Lease Class: A Years: 2020 Zone: CIC

Contact: Kristine Davis

Co-Listed 1 with Frank Martin

Description: Newly constructed, Class A medical/professional office with +/- 6,500 square feet situated on just over seven acres in a prominent business center in Southwest Roanoke County. The building features a brick exterior, high-end finishes, virus control technology, ample parking (over...



## 89 Summers Way

Roanoke, Virginia, 24019

Type: Office

For: Sale or Lease Class: B Years: 2001 Zone: B

Contact: Kristine Davis

Co-Listed 1 with Frank Martin

Description: Two Spaces Available - Upstairs Former Pediatric Practice With Several Offices, and Downstairs Office Off of the Main Lobby. Upstairs Can Be Subdivided Into Two Offices of 3000 SF Each. Located in a Small...



## Peters Creek Station

Roanoke, Virginia, 24017

Type: Office

For: Lease Class: C Years: 1977 Zone: CG

Lease Rate: \$13.00

Contact: Gavin Hollingsworth

Description: One small office space located on a highly trafficked corridor, Peters Creek. Great for a new business or a small agency/organization. Open room for a reception area as you walk in. One office for privacy. Another room provides space for...



**Hall Associates**  
Commercial Real Estate Solutions



## 3220 McVitty Rd

Roanoke, Virginia, 24018

Type: Office

For: Sale Class: N/A Years: 1950 Zone: C1CS

Contact: Kristine Davis

Co-Listed 1 with Frank Martin

Description: Prime location in desirable SW Roanoke County near Cave Spring Corners. +/- 3,826 square feet on approximately 1.1 acres, offering plenty of room for potential. The surrounding area is known for its welcoming community and convenient access to amenities including...



## 4437 Starkey Road

ROANOKE, Virginia, 24018

Type: Office

For: Sale or Lease Years: 1993/2009 Zone: C2

Contact: Frank Martin

Description: Outstanding opportunity nestled in the heart of SW Roanoke County encompassing +/- 7,729 square feet with a strong tenant in place- Carilion/Jefferson Surgical. One portion of this building is available For Lease with approximately +/- 3,386 square feet available. This building...



## One City Plaza

Roanoke, Virginia, 24011

Type: Office

For: Lease Years: 1919 Zone: D

Lease Rate: \$12.00

Contact: Gavin Hollingsworth

Co-Listed 1 with Elliot Broyles

Description: One City Plaza is a wonderfully renovated mixed-use building in Downtown Roanoke. Rare and unique speakeasy space available on the lower level. Mostly open with a bar, prep room, beer cooler, and more! = \$2,000 per month First floor and mezzanine are...



**Hall Associates**  
Commercial Real Estate Solutions



## Jefferson Office Building Downtown Roanoke

Roanoke, Virginia, 24011

Type: Office

For: Sale or Lease Class: B Years: 1900 Zone: D

Contact: Gavin Hollingsworth

Description: Great opportunity to own a two-story office building with a mezzanine in Downtown Roanoke. Excellent location across from Mast General Store and between Well Hung Vineyards and Davidson's. The floor plan offers mostly office space with the first floor consisting...



## 4334 Brambleton

Roanoke, Virginia, 24018

Type: Office

For: Lease

Lease Rate: \$18.00

Contact: Christopher Nelson

Description: This building has a total of 1809 sq. ft. on two floors. Private parking lot, located on a high-traffic part of Brambleton. Located on Brambleton Avenue next door to Lewis Gale Imaging.



## 509 Roanoke Rd

Daleville, Virginia, 24083

Type: Retail

For: Sale Zone: B1

Contact: Christopher Nelson

Description: This property includes two lots (tax ID #'s 101-46 & 101-46A). The building is approximately 1,634 square feet and sits on a 0.789 acre site. It is zoned B1 which allows for many retail/office uses. Located right off I81 at exit...



**Hall Associates**  
Commercial Real Estate Solutions



## Warehouse Row

Roanoke, Virginia, 24011

Type: Office

For: Lease Class: A

Lease Rate: \$16.50

Contact: Christopher Nelson

Co-Listed 1 with Stuart Meredith CCIM,SIOR

Description: Suite 100 - 2722 sq ft Rental rate \$16.50, Full Service Suite 110 - 3731 sq ft Rental rate \$16.50, Full Service Suite 200-210 - 2378.20 sq ft Rental rate \$16.50, Full Service Suite 220 - 1478 sq ft Rental rate \$16.50, Full...



## 27 Covington Ln

Ridgeway, Virginia, 24148

Type: Land

For: Sale

Contact: Stuart Meredith CCIM,SIOR

Description: 17.51 acre site with 1,321 feet of frontage on 220 at the corner of Greensboro Rd/220 and Covington Lane in Ridgeway VA



## Coffee Pot

Roanoke, Virginia, 24015

Type: Retail

For: Sale Years: 1936

Contact: Christopher Nelson

Description: This iconic roadhouse restaurant was built in 1936. The building is 3912 square feet and sits on a .31-acre site. It is on the National Registry of Historic Places as well as the Virginia Landmarks Register. Over the years, the...





**Hall Associates**  
Commercial Real Estate Solutions



## Market Square East

Roanoke, Virginia, 24012

Type: Retail

For: Sale

Contact: Christopher Nelson

Co-Listed 1 with Stuart Meredith CCIM,SIOR

Description: Approximately 52,700 sq. ft. retail center Well maintained High-traffic corridor New video security system installed in 2023 3 national tenants in the center as well as many in close proximity Wells Fargo out parcel not included in sale 7% cap...



## Industrial Flex Space

Roanoke, Virginia, 24017

Type: Industrial

For: Lease      Zone: Industrial

Lease Rate: \$8.00

Contact: Thomas Turner

Description: Approximately 5,500 square feet of office/industrial space in a 29,000 square feet one story industrial building. Suitable for office, R&D and light industrial uses. Space includes private offices, large open areas, two restrooms and break area. Landlord...



## 408 S Jefferson St

Roanoke, Virginia, 24011

Type: Retail

For: Lease      Years: 1925      Zone: D

Lease Rate: \$20.00

Contact: Frank Martin

Description: With +/- 1,750 square feet, this space offers a perfect opportunity to benefit from the vibrant atmosphere that downtown Roanoke has to offer- with heavy foot traffic from nearby restaurants and retail stores, drawing patrons of all ages and interests.â€ Terrific...



**Hall Associates**  
Commercial Real Estate Solutions



## 190 Franklin St

Rocky Mount, Virginia, 24151

Type: Retail

For: Sale Class: C Years: 1948 Zone: CBD

Contact: Frank Martin

Description: +/- 3,527 square foot building, formerly a floral shop, is situated on a busy stretch of Franklin St in Rocky Mount, VA. It features high ceilings, natural light, a walk-in cooler, a movable walk-in cooler, a greenhouse, and ample parking....



## 656 Elm Ave

Roanoke, Virginia, 24016

Type: Office

For: Sale Class: B Years: 1938 Zone: CN

Contact: Frank Martin

Description: Excellent opportunity with +/- 5,553 square feet of office space. The building boasts modern finishes with large workrooms, cubicles, conference rooms, a courtyard, and plenty of natural light featuring large windows and skylights. This eye-catching office space has seen renovations in...



## Clip & Dip/The Refinery

Roanoke, Virginia, 24018

Type: Retail

For: Sale Zone: C2

Contact: Christopher Nelson

Co-Listed 1 with Stuart Meredith CCIM,SIOR

Description: This property consists of two fully leased buildings zoned C2 in the County of Roanoke. The first building is at 3406 Brambleton Avenue and is 1,644 square feet on a .37 acre site. The second is 4,103 square feet on...



**Hall Associates**  
Commercial Real Estate Solutions



## Westlake Shopping Center

Hardy, Virginia, 24101

Type: Investment Property

For: Lease Years: 1988 Zone: B2

Contact: Stuart Meredith CCIM,SIOR

Description: UNDER NEW OWNERSHIP! Wonderful retail and restaurant opportunities available here! Suites ranging from 1,200 square feet up to 7,221 square feet. Undergoing exterior and interior renovations! Call now for more information! Westlake Shopping Center is approximately 57,250 square feet situated...



## 1301 Rockland Ave

Roanoke, Virginia, 24012

Type: Office

For: Lease Years: 1981 Zone: I-1

Lease Rate: \$16.00

Contact: Frank Martin

Description: This +/- 8,724 SF office space situated on Interstate 581 just minutes from Roanoke, VA is perfect for business needing office space, such as real estate, mortgage, insurance, software development, contractors, heavy equipment sales and service, and trucking companies.â€ It...



## 20 Church Ave

Roanoke, Virginia, 24011

Type: Office

For: Lease Class: C Years: 1915 Zone: D

Lease Rate: \$18.00

Contact: Frank Martin

Description: First floor office space with 5 separate interior offices in a terrific downtown location.â€ The rental rate covers water and electric, insurance and CAM charges, with cable and janitorial available for an additional charge.â€ Nearby parking Across from the parking garage...



**Hall Associates**  
Commercial Real Estate Solutions



## 15 Salem Ave SE

Roanoke, Virginia, 24011

Type: Office

For: Lease Class: B Years: 1999 Zone: Downtown

Lease Rate: \$16.00

Contact: Frank Martin

Description: Outstanding renovated office location in Downtown Roanoke- this space was a former attorney's office and is move-in ready. Offering +/- 1,330 square feet, it has two large offices, a waiting room, a reception area, and a kitchenette. Excellent central location in...



## Residential land with commercial potential

Roanoke, Virginia, 24017

Type: Land

For: Sale Zone: R-7

Contact: Thomas Turner

Description: Four Roanoke City tax parcels currently zoned R-7, Single Family. Addresses are 0,3731,0 and 3715 Shenandoah Avenue. Commercial potential. Property has road frontage on Shenandoah Avenue and Old Stevens Road. Cleared parcels. Utilities on Shenandoah...



## 5060 Valley View Blvd NW

Roanoke, Virginia, 24012

Type: Office

For: Lease Class: B Years: 1994/2010 Zone: CG

Lease Rate: \$14.00

Contact: Frank Martin

Description: Prime office building located on Valley View Blvd within walking distance to Valley View Mall - the region's largest shopping mall. This building features a mix of open and private workspace with ample parking. Perfect for medical, dental, or other...





**Hall Associates**  
Commercial Real Estate Solutions



## 1502 Franklin Rd SW

Roanoke, Virginia, 24016

Type: Office

For: Lease Class: C Years: 1910/1996 Zone: MX

Lease Rate: \$19.15

Contact: Frank Martin

Description: Former legal office - perfect for another attorney or professional wanting proximity to downtown and/or the Carilion campus. Built in 1910, this classic building offers hardwood floors, natural wood finishes, and lots of natural light.



## 95 Ponderosa Dr NE

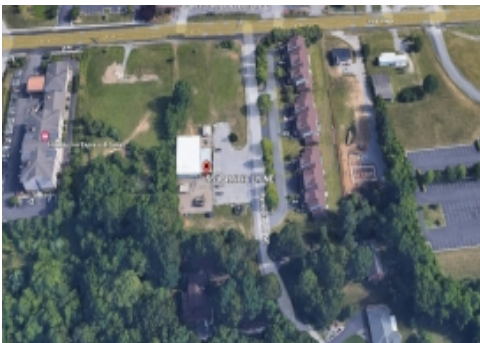
Christiansburg, Virginia, 24073

Type: Office

For: Sale Class: B Years: 1999 Zone: B3

Contact: Frank Martin

Description: Excellent medical office building with +/- 3,219 square feet.



## 95 Patricia Ln NE

Christiansburg, Virginia, 24073

Type: Land

For: Sale Zone: B3

Contact: Frank Martin

Description: Vacant building (former day care/early learning center) situated on 1.65 acres, just off of Roanoke Blvd. NE in Christiansburg. Zoned B3, this location would be perfect for fast food, a small hotel, a restaurant or any other commercial business desiring...



**Hall Associates**  
Commercial Real Estate Solutions



## Cove Road

Roanoke, Virginia, 24017

Type: Land

For: Sale      Zone: Commercial

Contact: Frank Martin

Description: This property listing encompasses two vacant parcels at the Grand Retreat: 3.41 Acres - \$784,900 3.31 Acres - 761,600 Both of these lots are on the front of the property and are zoned C2 - commercial. The Landlord is looking for development that...



## 4860 Rucker Road

Moneta, Virginia, 24121

Type: Office

For: Lease    Class: B    Years: 1978    Zone: AV

Lease Rate: \$80.40

Contact: Frank Martin

Description: Terrific office building located in the heart of Moneta - perfect for a medical practitioner with a small practice or office user looking for an office in the thriving SML community. Two levels - both walk-in from the parking area....



## 0 Dale Ave

Roanoke, Virginia, 24013

Type: Land

For: Sale      Zone: RM-2

Contact: Christopher Nelson

Description: 4 Tax Parcels #4310905, 4310906, 4310907, 4310908. Approximately .5983 acres with 180 feet of frontage on Dale Avenue. Zoned RM-2 in the City of Roanoke. The property can accommodate single and multi-family houses. Property is located adjacent to the Neighborhood...



**Hall Associates**  
Commercial Real Estate Solutions



## Windsor Hills Executive Center

Roanoke, Virginia, 24018

Type: Office

For: Lease Class: A Years: 2020 Zone: CIC

Lease Rate: \$17.50

Contact: Frank Martin

Description: Newly constructed, Class A medical/professional office buildings situated on just over seven acres in prominent business center in Southwest Roanoke County. Both buildings feature brick exterior, high-end finishes, virus control technology, ample parking (over 70 spaces), and digital monument signage...



## 7535 Williamson Rd

Hollins, Virginia, 24019

Type: Retail

For: Lease Class: C Years: 1955/1995 Zone: C2

Lease Rate: \$12.47

Contact: Frank Martin

Description: This former drug store is an outstanding retail location located in the heart of the growing Hollins community of North Roanoke. Located near the intersection of Hollins and Plantation, it features 3800 SF, and can be a retail shop, a...



## 5604 Starkey Rd

Cave Spring, Virginia, 24018

Type: Office

For: Lease

Lease Rate: \$16.50

Contact: Frank Martin

Description: Terrific office space in terrific office location - 2200 +/- SF of professional office space in a convenient Starkey location with plenty of on-site parking for staff and visitors.





**Hall Associates**  
Commercial Real Estate Solutions



## 3440 Brandon Ave SW

Roanoke, Virginia, 24018

Type: Land

For: Lease Zone: CG

Contact: Frank Martin

Description: Adjacent to the Ferguson Bath and Kitchen Gallery, this parcel is +/- 0.7 Acres of flat land with commercial/ industrial zoning available for a build-to-suit. Owner will build a storefront space to tenant's specifications in return for a long-term lease.



## 1051 Texas St

Salem, Virginia, 24153

Type: Office

For: Lease Class: B Years: 2005 Zone: BCD

Lease Rate: \$16.00

Contact: Frank Martin

Description: Located Right Off Texas Street and Corporate Blvd in Salem, Virginia, This Office Building Offers Versatile Space to Cater to a Wide Variety of Tenants. Fitted With Ample Parking and a One Story Spread Out Office Layout, the Property Could...



## 2222 Electric Rd

Cave Spring, Virginia, 24018

Type: Office

For: Lease Class: B Years: 1983 Zone: C2C

Lease Rate: \$12.00

Contact: Frank Martin

Description: High-visibility office opportunity on Electric Road in sought-after southwest Roanoke County. Electric Road is Roanoke's premier business corridor between Roanoke and Salem. This space was the former location of Gwyn Harmon REALTORS and offers exceptional street signage on Electric Road.





**Hall Associates**  
Commercial Real Estate Solutions



## 4519 Brambleton Ave

Roanoke, Virginia, 24018

Type: Office

For: Lease Class: C Years: 1995 Zone: C2

Lease Rate: \$11.00

Contact: Frank Martin

Description: Office Building in Southwest County - space available on the first (2664 SF) and second floor (1132 SF).â€ Ample parking around the building; convenient first floor access to the largest space.â€



## 128 Campbell Avenue SE

Roanoke, Virginia, 24011

Type: Office

For: Lease Class: B Years: 1912/2012 Zone: D

Lease Rate: \$19.00

Contact: Frank Martin

Description: These Offices Are Super Convenient Office Suites On The Third Floor Of The Shenandoah Hotel In Downtown Roanoke, With Easy Access Through The Rear Of The Building.â€ Some Parking In The Rear Lot Will Be Available To Tenants On A...



## 8 E. Main St

Salem, Virginia, 24153

Type: Office

For: Lease Years: 1999 Zone: DBD

Lease Rate: \$14.50

Contact: Frank Martin

Description: Pinnacle Bank is on the first floor of the building, and the second floor is open for lease.â€ There are twenty parking spaces in the back parking lot, and the building is located within easy walking distance of the Courthouse,...



**Hall Associates**  
Commercial Real Estate Solutions



## 110 Campbell Ave SW

Roanoke, Virginia, 24011

Type: Office

For: Lease Class: B Years: 1910 Zone: D

Lease Rate: \$11.90

Contact: Frank Martin

Description: The Aurora Is Located In The Downtown Arts District Of Downtown, Roanoke, Va And Offers Spacious Apartments And Versatile Artist Studios. As A Historic Renovation, The Aurora Is Designed To Foster A Center For Creatives, Makers And Urban Dwellers Alike...



## 7403 Williamson Rd

Hollins, Virginia, 24019

Type: Retail

For: Sale Years: 1960/2000 Zone: C2

Contact: Frank Martin

Description: This listing includes two properties: 7403 Williamson, and 7409 Williamson. 7403 = 4500 SF on .3943 AC 7409 = 2880 Sf on .3444 AC Total = .7387 AC Corner lot location in a high visibility and high traffic area of Hollins (10,000 AADT) Combine two...



## Old Country Plaza

Roanoke, Virginia, 24018

Type: Retail

For: Lease Class: B Years: 1983 Zone: C2CS

Contact: Gavin Hollingsworth

Description: Old Country Plaza - Prime Retail Space available Outstanding shadow and strip mall anchored by Food Lion and one of the most successful Buffalo Wild Wings in the USA, located within the most desirable demographic section in Roanoke. Ample parking. Great...



**Hall Associates**  
Commercial Real Estate Solutions



## 0 S Main & Dowdy

Blacksburg, Virginia, 24060

Type: Land

For: Sale      Zone: CG

Contact: Frank Martin

Description: Flat, pad-ready lot on S Main in Blacksburg.



## 1414 Franklin Road

Roanoke, Virginia, 24016

Type: Office

For: Sale    Class: A    Years: 1986

Contact: Stuart Meredith CCIM,SIOR

Description: 2 story office on the corner of Franklin Road and Woods Avenue.



## 23B Church Avenue SW

Roanoke, Virginia, 24011

Type: Retail

For: Sale or Lease    Years: 1914/2019    Zone: D

Contact: Frank Martin

Co-Listed 1 with Stuart Meredith CCIM,SIOR

Description: Former Fallon Florist building that needs a new owner and some love to reach its full potential. It's located on Church Ave., one of the best streets in downtown Roanoke - a one-way street with plenty of on-street parking and...



**Hall Associates**  
Commercial Real Estate Solutions



## 22111 Timberlake Rd

Lynchburg, Virginia, 24502

Type: Retail

For: Sale or Lease    Years: 2015    Zone: B-GC, C

Contact: Frank Martin

Description: The building is around 8000 SF (80X100) and is currently empty - it's available for purchase but also for lease at \$11.00 PSF NNN.



## 7,500 SF For Lease in Botetourt

Roanoke, Virginia, 24019

Type: Office

For: Sale or Lease    Class: B    Years: 2001    Zone: B

Contact: Frank Martin

Description: Two spaces available - upstairs former pediatric practice with several offices, and downstairs office off of the main lobby. Upstairs can be subdivided into two offices of 3000 SF each. Located in a small development on Alt 220 between 460 and...



## Former Layman Orchard Property

Daleville, Virginia, 24083

Type: Land

For: Sale    Zone: Commercial

Contact: Frank Martin

Description: Across the road from the Daleville Town Center and in the middle of the retail and multi-family developments that are happening in Botetourt County now, this parcel presents one of the finest retail opportunities left in the Daleville market. Lot with...





**Hall Associates**  
Commercial Real Estate Solutions



## 3768 Challenger Ave, Roanoke, VA 24012

Roanoke, Virginia, 24012

Type: Land

For: Sale Zone: C-1

Contact: Frank Martin

Description: This is an outstanding opportunity to own one of the few commercial sites left with road frontage on the north side of 460/Challenger Ave, located in Roanoke County just over the Roanoke City border. There is a brand new Starbucks opening...



## 3525 Keagy Rd, Salem, VA 24153

Salem, Virginia, 24153

Type: Investment Property

For: Sale Zone: HBD

Contact: Frank Martin

Description: Outstanding lot on the curve - 3525 Keagy. Zoned HBD, this sizable lot is perfect for a dental office, medical building, a standard office - and the lot will offer plenty of parking and convenient access and egress to Keagy...



## Former Layman's Orchard Property

Daleville, Virginia, 24083

Type: Land

For: Sale

Description: This 4.081 ACRE parcel was part of a sale of 10.455 acres that closed in March of 2019. The adjoining (back) 6.4 AC parcel is to become a self-storage business. Rezoning from A1 to commercial was completed prior to the...



**Hall Associates**  
Commercial Real Estate Solutions



## Bedford Prime Commercial Land

Bedford, Virginia, 24523

Type: Land

For: Sale

Contact: Gavin Hollingsworth

Co-Listed 1 with Thomas Turner

Description: Attractive commercial land with prime development opportunity neighboring national companies like Walmart, Tractor Supply Company, and Lowe's. Located along Highway 460 with approximately 1,278 feet of road frontage. Between two signal lights. Public Water and Sewer are available. Zoned B-2...



## 730 West Main Street

Appalachia, Virginia, 24216

Type: Retail

For: Lease

Contact: Christopher Nelson

Description: Two spaces available: One with 4,400 sqft and one with 2,400 sqft. Both are leased at \$7.00/sqft/YR. It is located next door to the Dollar General on Main Street in Appalachia.



## 2002 Williamson Road

Roanoke, Virginia, 24012

Type: Retail

For: Lease

Contact: Christopher Nelson

Description: Two buildings on the property, the main service building is approximately 9,259 sqft, the second building is approximately 4,140 sqft on a .8629 acre lot. Built in 1965 as a tire/service building and has run continuously since. Currently occupied by Tire...



**Hall Associates**  
Commercial Real Estate Solutions



## 130 Sycamore Ave

Roanoke, Virginia, 24012

Type: Office

For: Lease

Contact: Christopher Nelson

Description: The space can be leased in two units of approximately 1,678 sqft each (\$1,000/month) or the entire building of 3,357 sqft (\$2,000/month) It is located a third of a mile from the intersection of Orange Avenue ( US 460) and...



## 19875 Virgil Goode Highway

Rocky Mount, Virginia, 24151

Type: Retail

For: Sale

Contact: Christopher Nelson

Description: 0440102300-8.9 AC zoned, B20440102307- 3.72 AC Zoned, B20440102200- .92 AC zoned, B20440102100-2.46 AC zoned B2/ 16,899 sqft building. The property is located just past the intersection of Wertz Road near Tractor Supply and Bojangles. Next door to Duncan Dealership. Co-List: Stuart...



## 2002 Williamson Road

Roanoke, Virginia, 24012

Type: Retail

For: Lease

Contact: Stuart Meredith CCIM,SIOR

Description: Lease Rate: \$9.40 NNN Two buildings on the property, the main service building is approximately 9,259 SF, the second building is approximately 4,140 SF on a .8629 acre site. Built in 1965 as a tire/service building and has run continuously...





**Hall Associates**  
Commercial Real Estate Solutions



## 19875 Virgil Goode Hwy

Rocky Mount, Virginia, 24151

Type: Land

For: Sale

Contact: Stuart Meredith CCIM,SIOR

Description: 16.01 Acres of Prime Land and 16,889 SF Building  
0440102300 - 8.9 AC Zoned B2 0440102307 - 3.72 AC Zoned B2  
0440102200 - .92 AC Zoned B2 0440102100 - 2.46 AC Zoned B2 | 16,899  
SF Building The property is located just past the intersection...



## 9 Sycamore Ave. NE

Roanoke, Virginia, 24012

Type: Office

For: Lease

Contact: Stuart Meredith CCIM,SIOR

Description: The space can be leased in two units of approximately 1,678 SF each (\$1000 per month) or the entire building of 3,357 SF. (\$2000 per month). Located a third of a mile from the intersection of Orange Avenue (US 460)...



## Cleburne Blvd, Dublin Land

Dublin, Virginia, 24084

Type: Land

For: Sale

Contact: Gavin Hollingsworth

Co-Listed 1 with Thomas Turner

Description: Prime 3.68 acres development site along Route 100 in Dublin, Virginia. Located 800 feet North of the intersection with Harvest Place. 539.20 feet of frontage on Route 100. Four lane asphalt paved state maintained street. Traffic...





**Hall Associates**  
Commercial Real Estate Solutions



## 6390 Old Mountain Road

Roanoke, Virginia, 24019

Type: Land

For: Sale

Contact: Thomas Turner

Description: Industrial tract with outstanding view. The listing price is below Roanoke County's assessed value. Cleared and gently rolling site with access from Old Mountain Road. Zoned I-1, Light Industrial. Public utilities are nearby. ...



## 0 Friar Tuck Lane

Christiansburg, Virginia, 24073

Type: Land

For: Sale

Contact: Gavin Hollingsworth

Description: 1 acre of land for sale off of Roanoke Street within the Summit Cut area, neighboring the residential community Robin Hood Estates. Map number and location - 498 - A37 Summit Cut.



## Rutrough Lots

Roanoke, Virginia, 24014

Type: Land

For: Sale

Contact: Gavin Hollingsworth

Description: These two parcels of land (4250205, 4250206) are being sold together for a combined price of \$350,000. With a total of 2.26 acres, these parcels neighbor a shopping center, which has the same entrance and drive as the lots. The...



**Hall Associates**  
Commercial Real Estate Solutions



## 16.86 ACRES of Developable Land

Roanoke, Virginia, 24017

Type: Land

For: Sale

Contact: Stuart Meredith CCIM,SIOR

Description: TWO LOTS: Tax ID 6370106 = 5.5299 Acres, and 629 FT of Peters Creek Road frontage. Tax ID: 6370107 = 11.33 Acres. Total Property: 16.86 Acres: 629 FT of Road frontage and approximate average depth of 1300 FT. Located just west of...



**Hall Associates**  
Commercial Real Estate Solutions

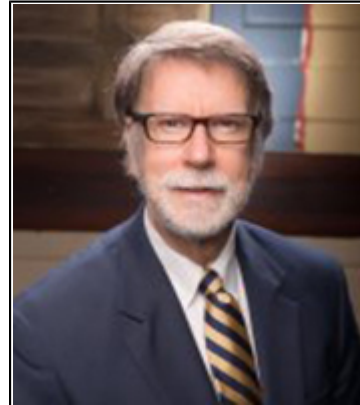
## Our Associates



Stuart Meredith CCIM, SIOR  
President/Managing Broker  
smeredith@hallassociatesinc.com  
(540) 982-0011



Edwin C. Hall  
Chairman Emeritus  
ehall@hallassociatesinc.com  
(540) 982-0011



Thomas Turner CCIM, SIOR  
Senior Associate Broker  
turner.hallassociates@gmail.com  
(540) 857-5858



Chris Nelson  
Senior Associate Broker  
cnelson@hallassociatesinc.com  
(540) 982-0011



Frederick Thomas  
Senior Sales Associate  
fthomas@hallassociatesinc.com  
(540) 982-0011



Lynn Hall  
Vice President of Residential  
Property Managem  
lhall@hallassociatesinc.com  
(540) 982-0011



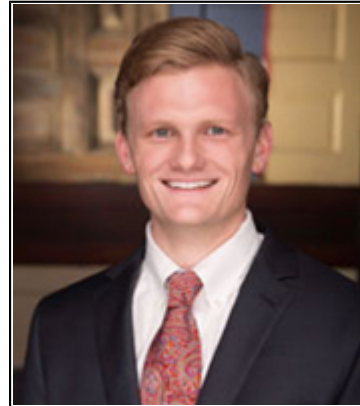
**Hall Associates**  
Commercial Real Estate Solutions



Frank Martin CCIM, SIOR  
Senior Associate Broker  
fmartin@hallassociatesinc.com  
(540) 857-5840



Jim Deyerle  
Sales Associate  
jdeyerle@hallassociatesinc.com  
(540) 982-0011



Gavin Hollingsworth  
Sales Associate  
ghollingsworth@hallassociatesinc.com  
540-982-0011, 540 797-8250(Cell)



Robert Powell  
Sales Associate  
rpowell@hallassociatesinc.com  
540-857-5864



Aaron Garland  
Sales Associate  
johnaarongarland@gmail.com  
(540) 798-8431



Tommy Hendrix  
Sales Associate



Licensed in Virginia, West Virginia, North Carolina & Tennessee



# Hall Associates

---

Commercial Real Estate Services  
Since 1975

(540) 982-0011  
112 Kirk Avenue SW  
Roanoke, VA 24011

WITH THE EXPERTISE AND KNOWLEDGE  
THAT ONLY COMES WITH EXPERIENCE.